

# AMA Journal of Ethics®

August 2023, Volume 25, Number 8: E646-650

## ART OF MEDICINE

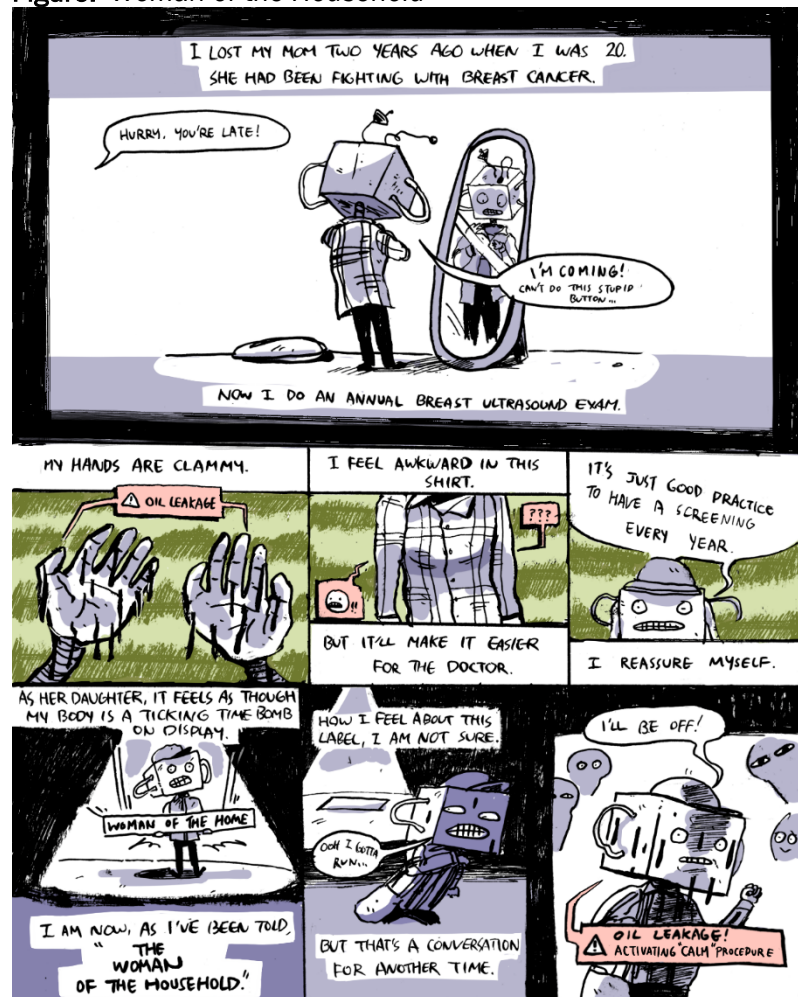
### Robot Comic

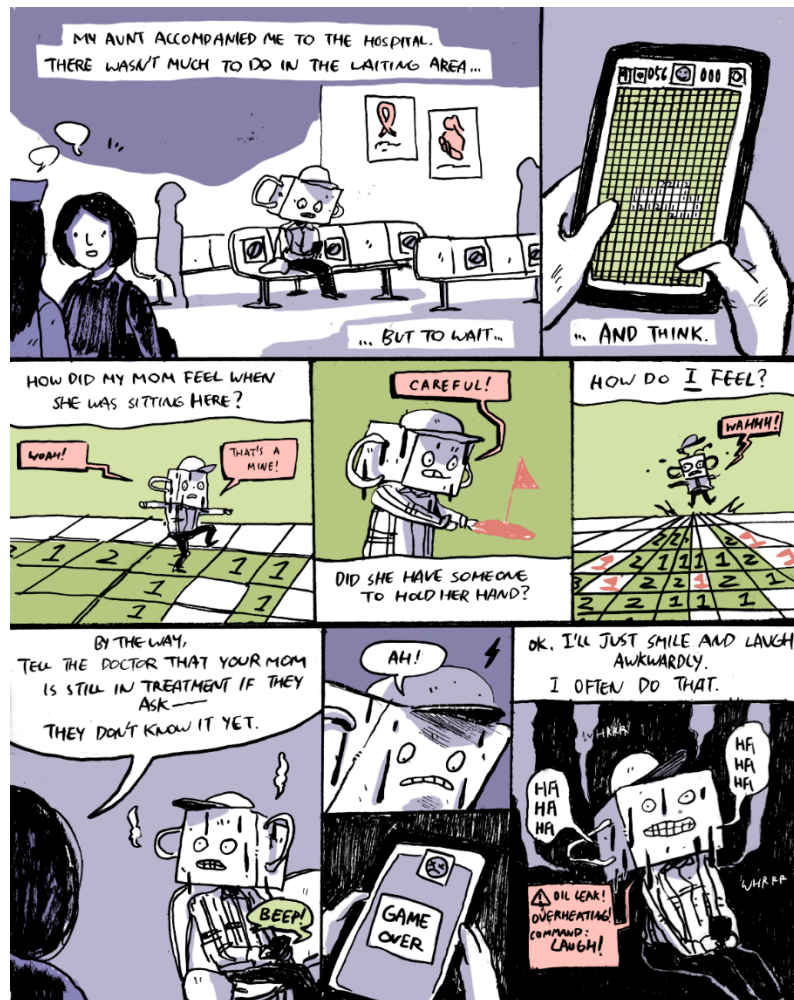
Kelly Wang

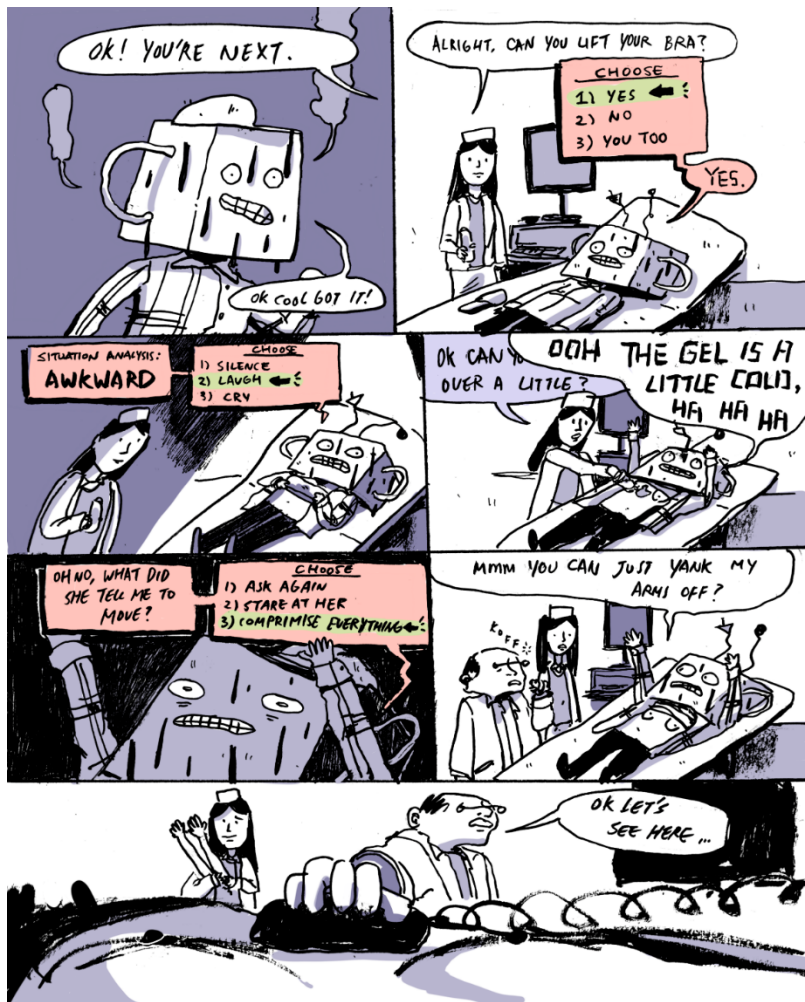
#### Abstract

This multipaneled comic follows a woman robot preparing for a breast examination. Oil “leakage” recurs in the comic, suggesting its ethical importance in metaphorically representing a patient’s stress responses.

Figure. *Woman of the Household*









Media  
Procreate®.

### Caption

In the comic, oil leakage from the robot woman is like sweat from a nervous patient. Feelings of anxiety, awkwardness, and grief can be considered in addition to stress from familial and gender expectations stemming from being labeled “woman of the household” upon losing one’s own mother to breast cancer.

**Kelly Wang** is a cartoonist, printmaker, and musician based in Chicago, Illinois.

**Citation**

AMA J Ethics. 2023;25(8):E646-650.

**DOI**

10.1001/amajethics.2023.646.

**Conflict of Interest Disclosure**

The author(s) had no conflicts of interest to disclose.

*The viewpoints expressed in this article are those of the author(s) and do not necessarily reflect the views and policies of the AMA.*