

AMA Journal of Ethics®

November 2024, Volume 26, Number 11: E886-889

ART OF MEDICINE

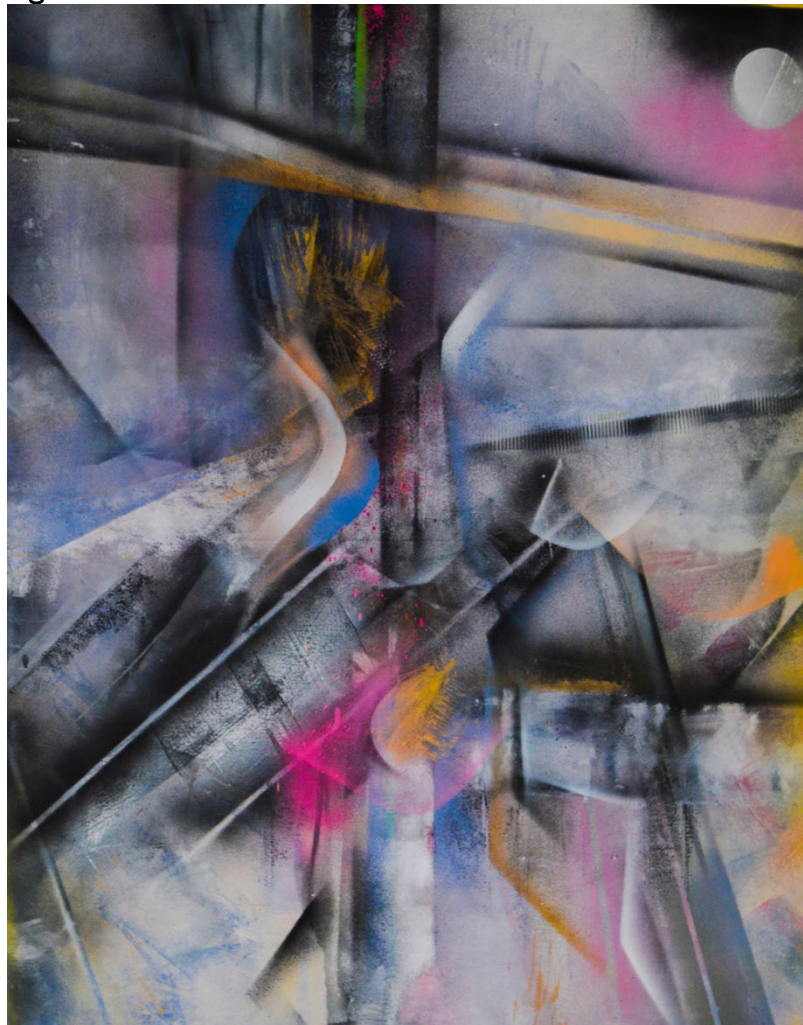
Tonal Imprints From Procedure to Prognosis

Shahina Jaffer

Abstract

Three mixed media, acrylic, ink, and airbrush paintings explore an image-guided interventional radiological procedure and hopeful prognosis.

Figure 1. *Holler*



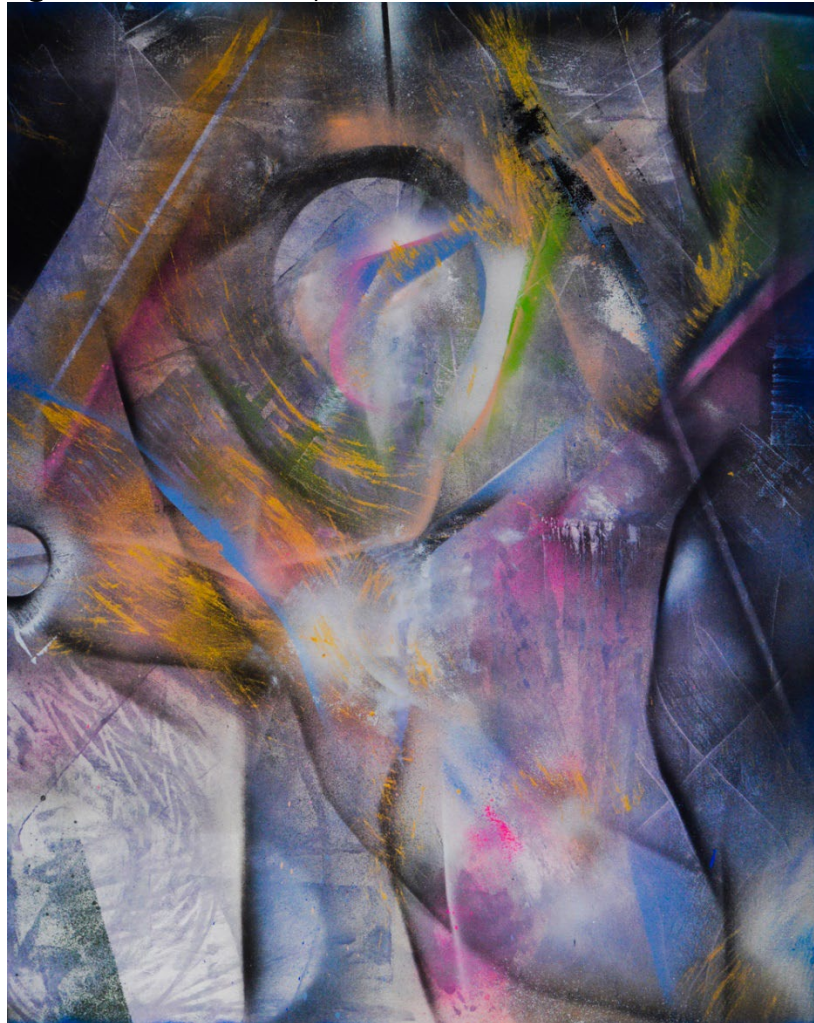
Media

81 cm x 100 cm; mixed media, acrylic, ink, and airbrush.

Caption

Holler is an emotional tapestry, centered on the artist's receipt of an **initial prognosis** and her preoperative experience. Heavily influenced by abstract expressionism—known for its emphasis on spontaneous, gestural expression—*Holler* suggests a battlefield of emotions, where color tonality is key: deep blues suggest introspection, while vibrant pink suggests urgency of an illness narrative unfolding. Each brush stroke is a whisper, perhaps, of fear, hope, and resilience.

Figure 2. *Wires and Whispers*



Media

81 cm x 100 cm; mixed media, acrylic, ink, and airbrush.

Caption

Wires suggest sound waves resonating, as if from a musical instrument, to transcend their physical origins. Pastel and dusky colors might evoke a viewer's sense of familiarity with hues of everyday life. Markings on the canvas, akin to whispers, symbolize the broader connections wires serve to forge between illness and healing.

Figure 3. *The First Tonal Imprint*



Media

81 cm x 100 cm; mixed media, acrylic, ink, and airbrush.

Caption

The First Tonal Imprint exemplifies a technique of layering paint, suggesting the precision sought by interventional radiology, in which a human body is penetrated without surgical incision for purposes of healing. Shapes within the painting gently unfold: dilation balloons are attached to catheters, and stents keep vessels open during procedures. Coils have a unique representational role here, too, suggesting an interplay of restriction and expansion as a radiologist manipulates vessels at different stages of a

procedure. Filters on one large vessel—the inferior vena cava, in particular—in the painting represent a bridge between containment of and **liberation from illness**.

Shahina Jaffer is an alumna of London’s St Martin’s School of Art whose work has been exhibited in London, Barcelona, New York, Mexico City, Genoa, and at the virtual Burning Man 2020 festival. She is also an accomplished artist and TEDx speaker. More of her artwork can be found at **Saatchi Art**.

Citation

AMA J Ethics. 2024;26(11):E886-889.

DOI

10.1001/amajethics.2024.886.

Conflict of Interest Disclosure

Author disclosed no conflicts of interest.

The viewpoints expressed in this article are those of the author(s) and do not necessarily reflect the views and policies of the AMA.