

AMA Journal of Ethics®

June 2025, Volume 27, Number 6: E438-439

ART OF MEDICINE

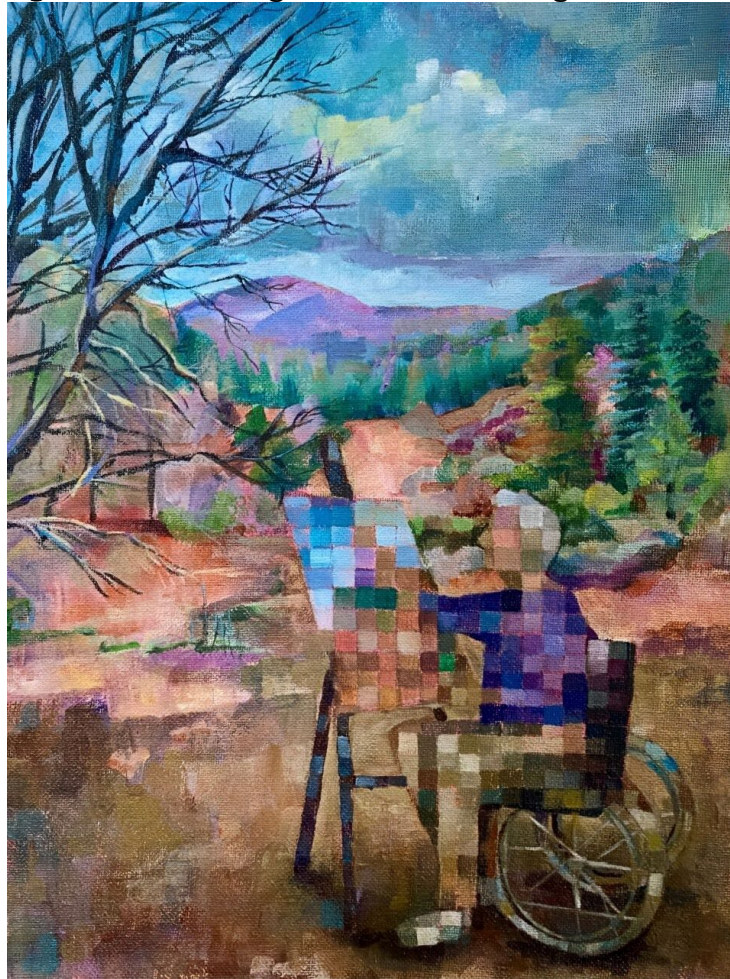
Painting Through Macular Degeneration

Michael Zitser

Abstract

This work considers adaptations required in an artist's creative processes to maintain artistic expression despite bodily and well-being changes over time.

Figure. *A Portrait of Age-Related Macular Degeneration, 2024*



Media

Acrylic paint on canvas, 9" x 12".

Caption

An artist in a wheelchair paints a mountain landscape *en plein air* (in the open air). The pixelation effect, which moves inward from the canvas margins toward the central figure, is represented as a metaphorical artifact of vision loss from age-related macular degeneration (AMD). Depression in patients with AMD is well studied,¹ and one might expect that **adaptation to vision loss** can be fraught in specifically poignant ways for artists whose creative processes rely on their embodiment in the field and their experiences and perceptions of natural light, which landscape painting *en plein air* demands.

References

1. Casten R, Rovner B. Depression in age-related macular degeneration. *J Vis Impair Blind*. 2008;102(10):591-599.

Michael Zitser graduated from California State University, Los Angeles with a bachelor of science degree in biochemistry and a minor in art. He has interests in biomedical research and the intersections of art and science.

Citation

AMA J Ethics. 2025;27(6):E438-439.

DOI

10.1001/amajethics.2025.438.

Conflict of Interest Disclosure

Author disclosed no conflicts of interest.

The viewpoints expressed in this article are those of the author(s) and do not necessarily reflect the views and policies of the AMA.